

VENTA

TERRENO INDUSTRIAL

Autopista Toluca – Atacomulco, San Cayetano
TOLUCA, ESTADO DE MÉXICO



LAND HIGHLIGHTS

+ 142,004 m²
Superficie

+ División de Lotes

+ Todos los
servicios

+ Uso de Suelo Industrial

+ Topografía Plana

+ Excelente Ubicación

+ Infraestructura AAA

+ Conectividad Carretera

+ Conectividad Ferroviaria

+ Disponibilidad Gas
Natural



VENTA TERRENO INDUSTRIAL

San Cayetano
TOLUCA
ESTADO DE MÉXICO



LOCATION | BUSINESS OPPORTUNITY

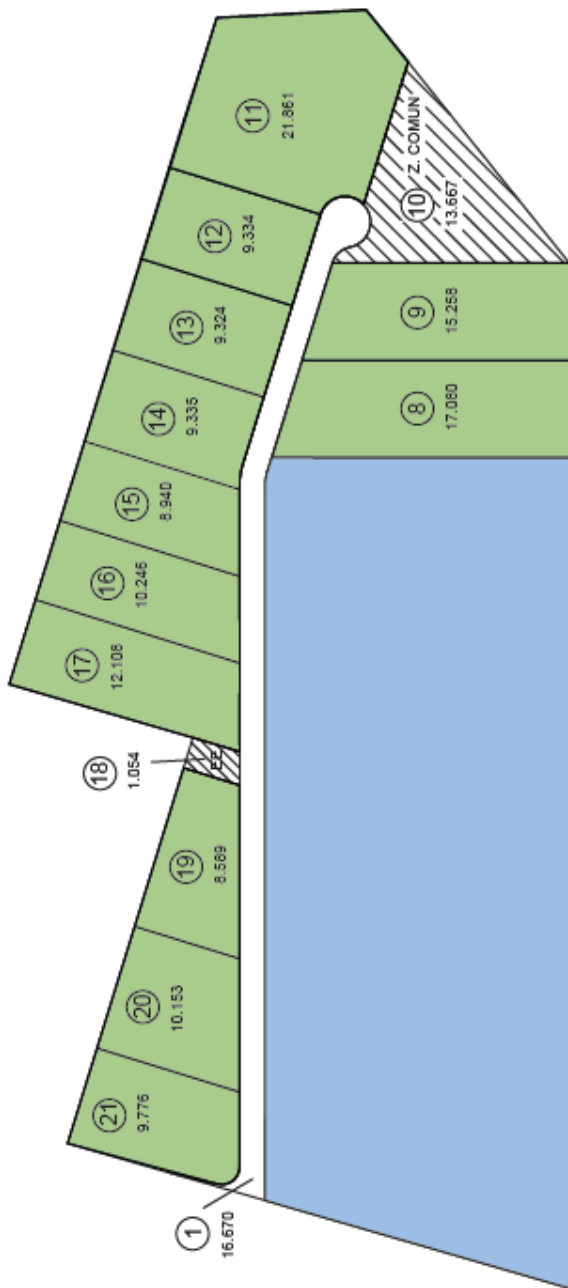


VENTA TERRENO INDUSTRIAL

San Cayetano
TOLUCA
ESTADO DE MÉXICO



FLOOR PLAN | SUBDIVISION PLAN



CUADRO DE AREAS

AREA LOTE COMPLETO 321,711 100.0%

L1- VIA	16,670	5.2%
L2- GLI	102,777	31.9%
L3- GLI	9,145	2.8%
L4- GLI	9,145	2.8%
L5- GLI	9,145	2.8%
L6- GLI	9,145	2.8%
L7- GLI	8,959	2.8%
L8- VENDIBLE	17,080	5.3%
L9- VENDIBLE	15,258	4.7%
L10 - CESION	13,667	4.2%
L11- VENDIBLE	21,861	6.8%
L12- VENDIBLE	9,334	2.9%
L13- VENDIBLE	9,324	2.9%
L14- VENDIBLE	9,335	2.9%
L15- VENDIBLE	8,940	2.8%
L16- VENDIBLE	10,246	3.2%
L17- VENDIBLE	12,108	3.8%
L18 - CESION INST. TECNICAS	1,054	0.3%
L19- VENDIBLE	8,589	2.7%
L20- VENDIBLE	10,153	3.2%
L21- VENDIBLE	9,776	3.0%

AREA CESION 5%	14,525.76	4.5%
AREA NETA VENDIBLE	290,515.24	90.3%
LOTES GLI	148,316	
AREA DISPONIBLE PARA VENDER	142,004	

VENTA
TERRENO INDUSTRIAL

San Cayetano
TOLUCA
ESTADO DE MÉXICO



REPORT SITE



VENTA TERRENO INDUSTRIAL

San Cayetano
TOLUCA
ESTADO DE MÉXICO



CONTACTO

ANTONIO ROMÁN

(55) 5284 0009

antonio.roman@cbre.com

RICARDO DE LA PARRA

(55) 5284 0009

ricardo.delaparra@cbre.com

JOSE MARIA ROBLES

(55) 5284 0009

jose.robles@cbre.com

© 2016 CBRE, Inc. The information contained in this document has been obtained from sources believed reliable. While CBRE, Inc. does not doubt its accuracy, CBRE, Inc. has not verified it and makes no guarantee, warranty or representation about it. It is your responsibility to independently confirm its accuracy and completeness. Any projections, opinions, assumptions or estimates used are for example only and do not represent the current or future performance of the property. The value of this transaction to you depends on tax and other factors which should be evaluated by your tax, financial and legal advisors. You and your advisors should conduct a careful, independent investigation of the property to determine to your satisfaction the suitability of the property for your needs.

Photos herein are the property of their respective owners and use of these images without the express written consent of the owner is prohibited.

www.cbre.com.mx

CBRE